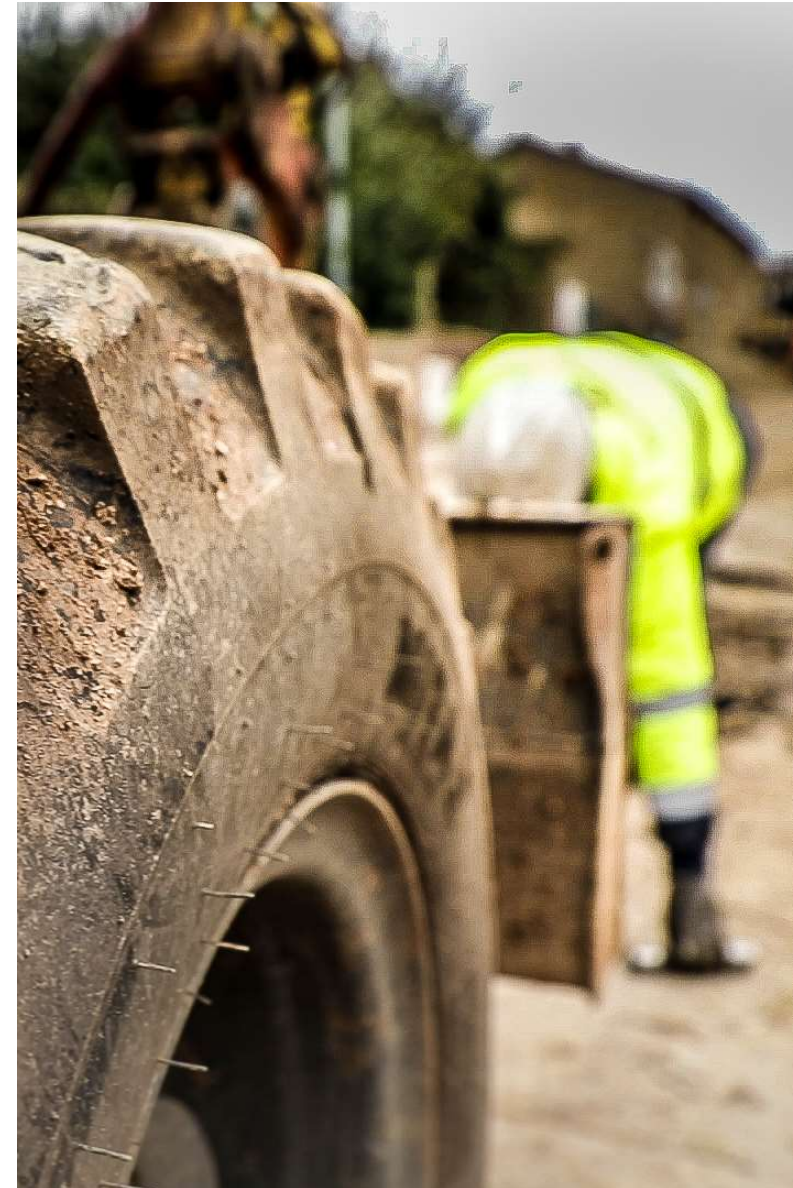


**STOPCOLLISION**

## **Collision Avoidance Systems**

2023 Survey - Results



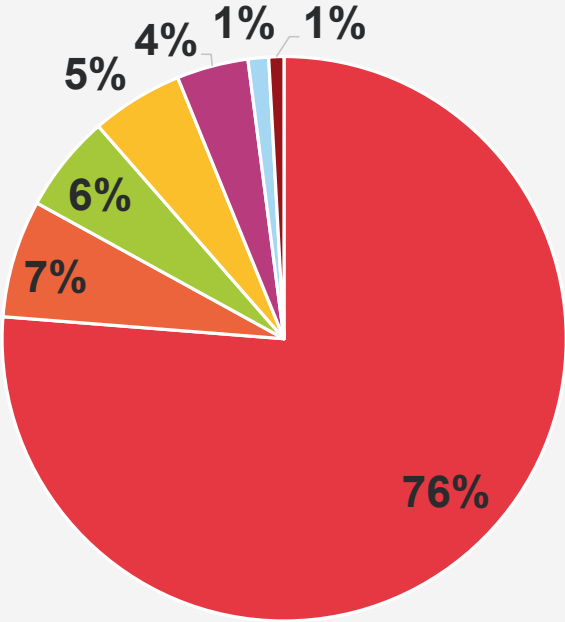
# General

- Survey between May and August 2023
- Shared by each professional organization to its members and LinkedIn post by all partners.
- 341 responses on August 2023, the 16th

# Contributor activity

# Contributor activity

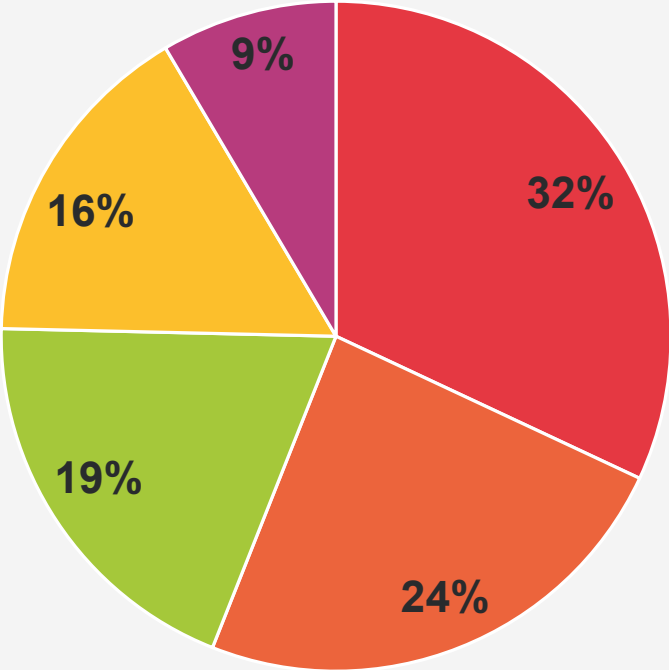
Q: Your main activity ?



- Final user
- Hiring company
- Manufacturer
- Other
- Dealer
- Prevention organization
- Trade union

# Contributor activity

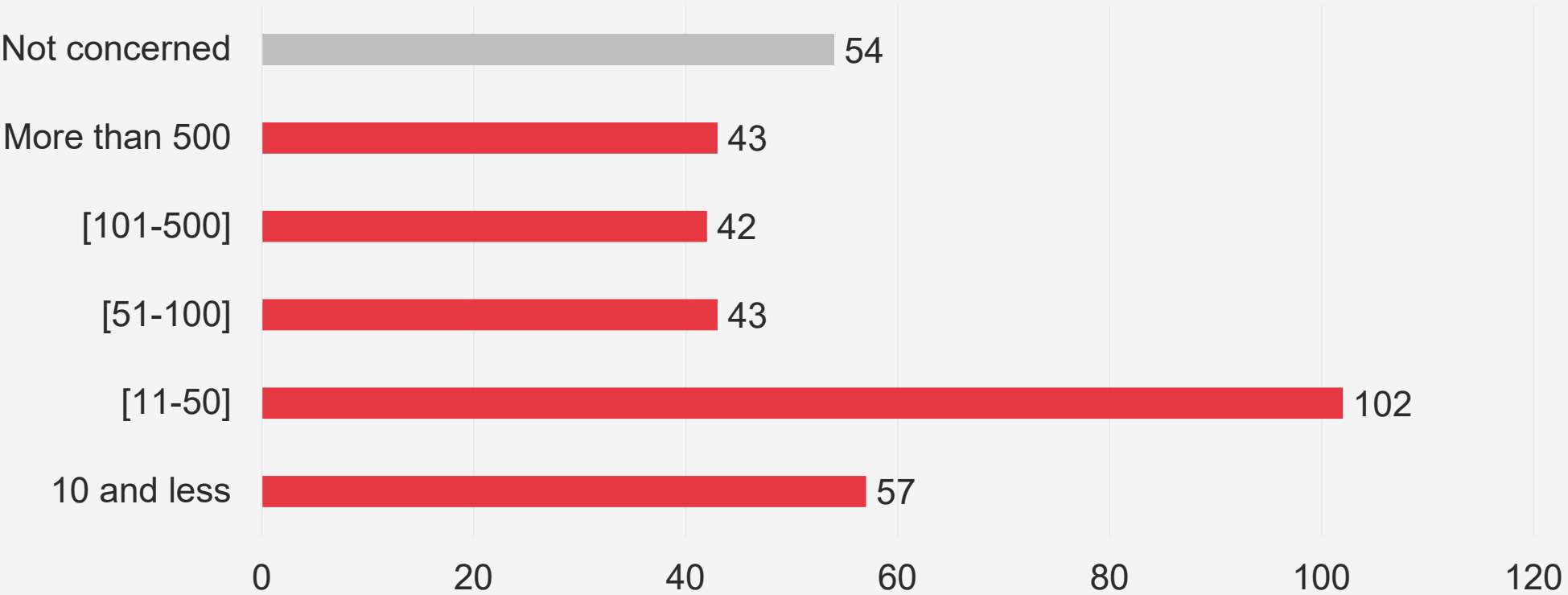
Q: Your role in your organization?



■ Construction Dpt ■ Quality-Safety-Environment ■ Management ■ Equipement Dpt ■ Other

# Size of the fleet

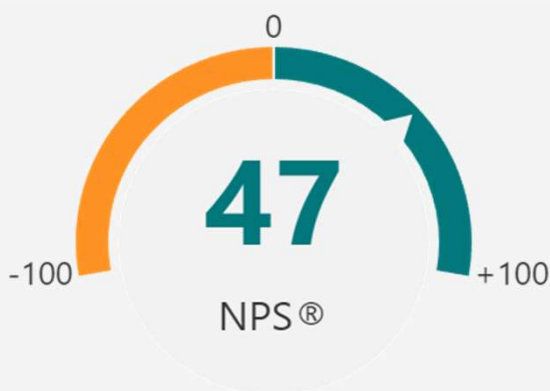
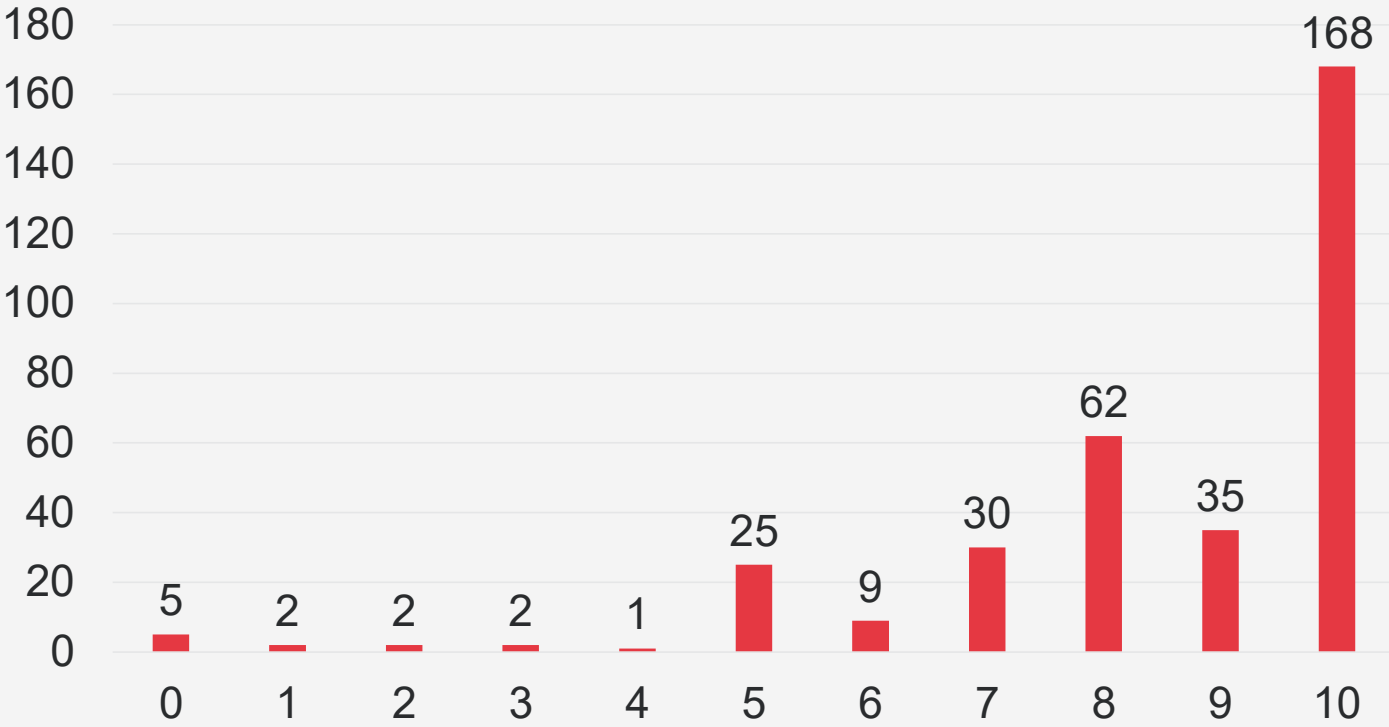
Q: The size of the fleet of machines belonging to your organization (machines of the 10 families concerned by the survey)?



# Main answers

# Interest in collision avoidance systems

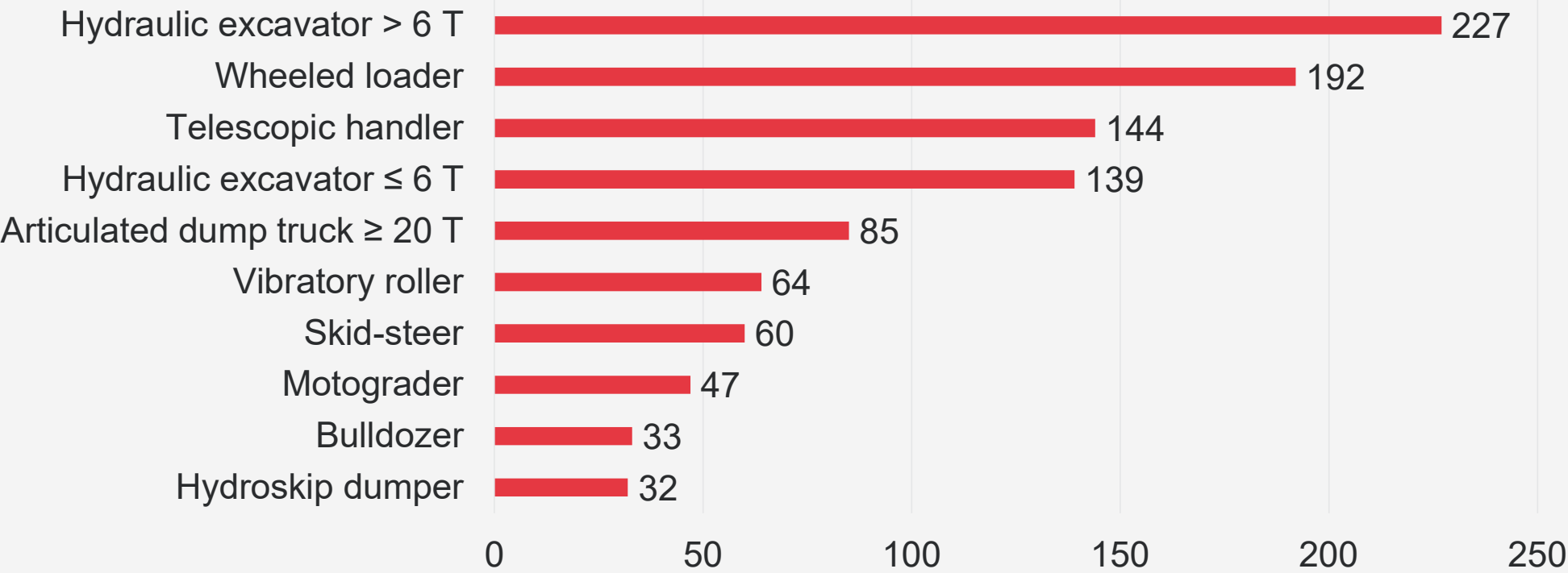
Q: Would you use or recommend machines equipped with collision avoidance systems? [0-10]





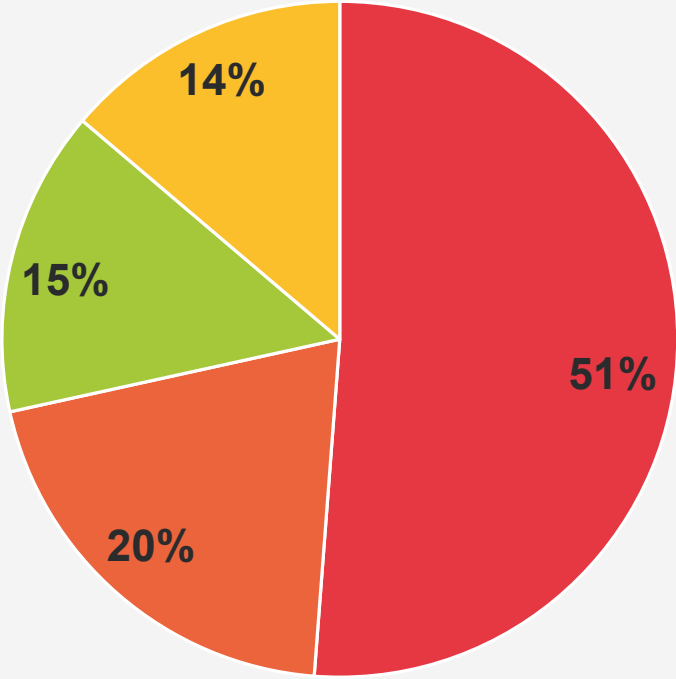
# Priority machinery families

Q: Among the following families of machines, select the 3 families on which the equipment in collision avoidance systems seems to you to be a priority.



# Wheel loader

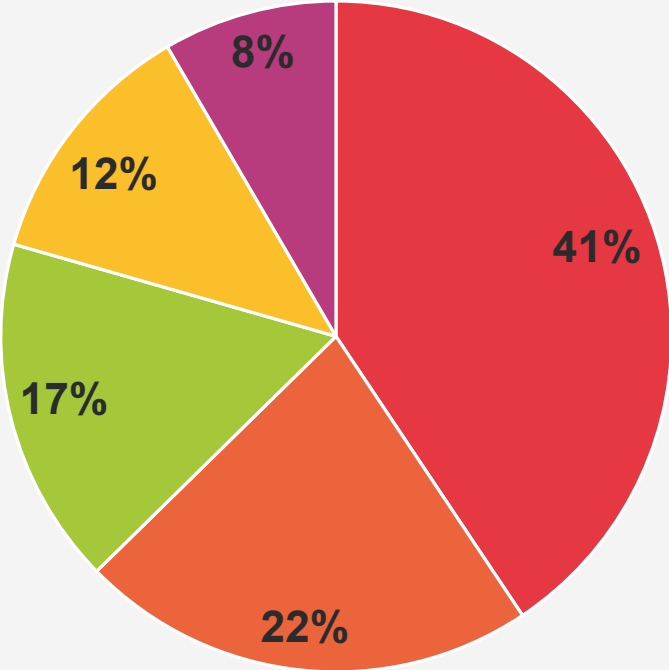
Q: Select the movements to stop (2 choices max)



■ Reverse ■ Steering ■ Forward ■ Bucket movements

# Telescopic handler

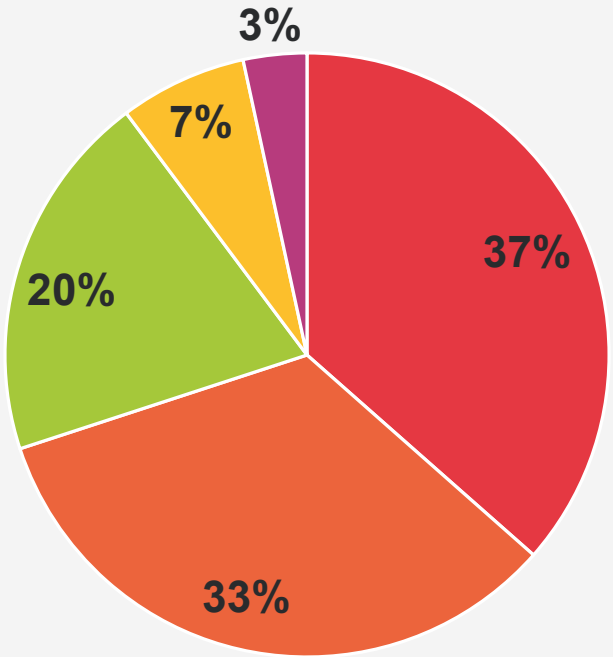
Q: Select the movements to stop (2 choices max)



■ Reverse   ■ Swing (if any)   ■ Bucket or forks movements   ■ Steering   ■ Forward

# Hydraulic excavator ≤ 6 T

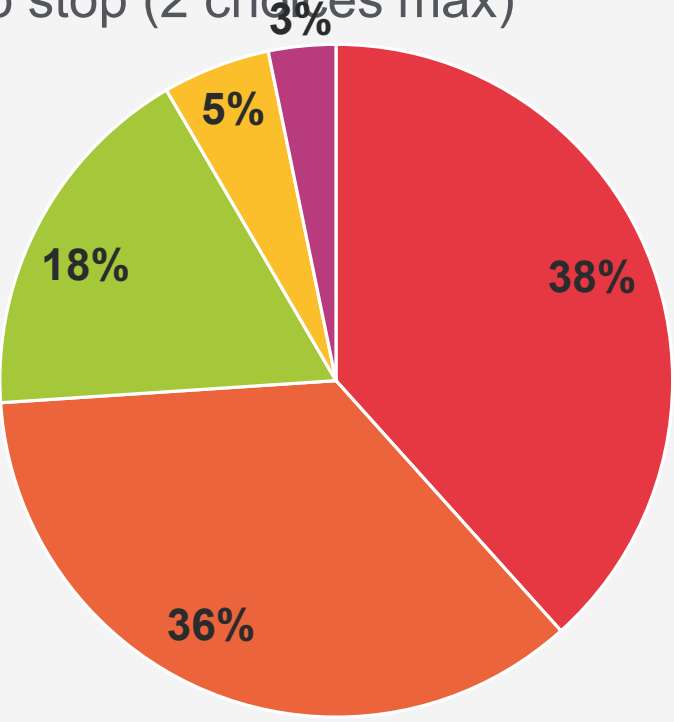
Q: Select the movements to stop (2 choices max)



■ Swing ■ Reverse ■ Bucket or tool movements ■ Steering ■ Forward

# Hydraulic excavator > 6 T

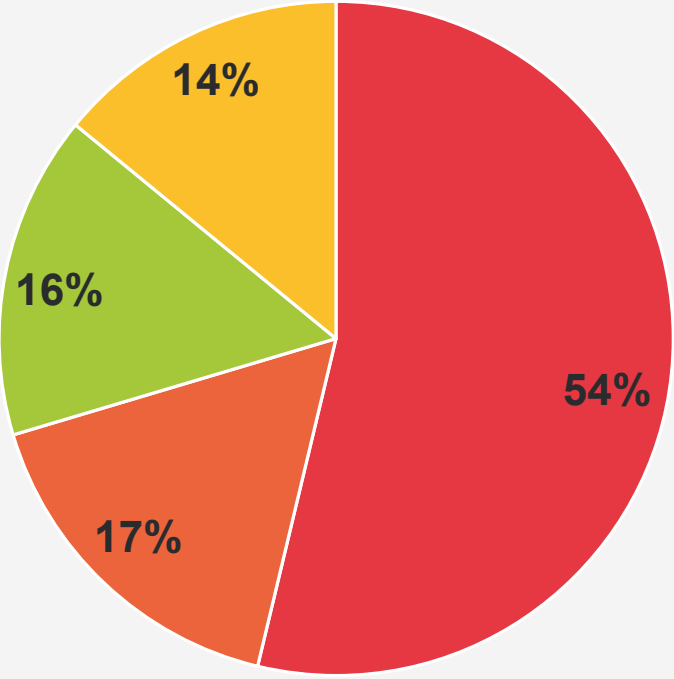
Q: Select the movements to stop (2 choices max)



■ Swing ■ Reverse ■ Bucket or tool movements ■ Steering ■ Forward

# Articulated dump truck ≥ 20 T

Q: Select the movements to stop (2 choices max)



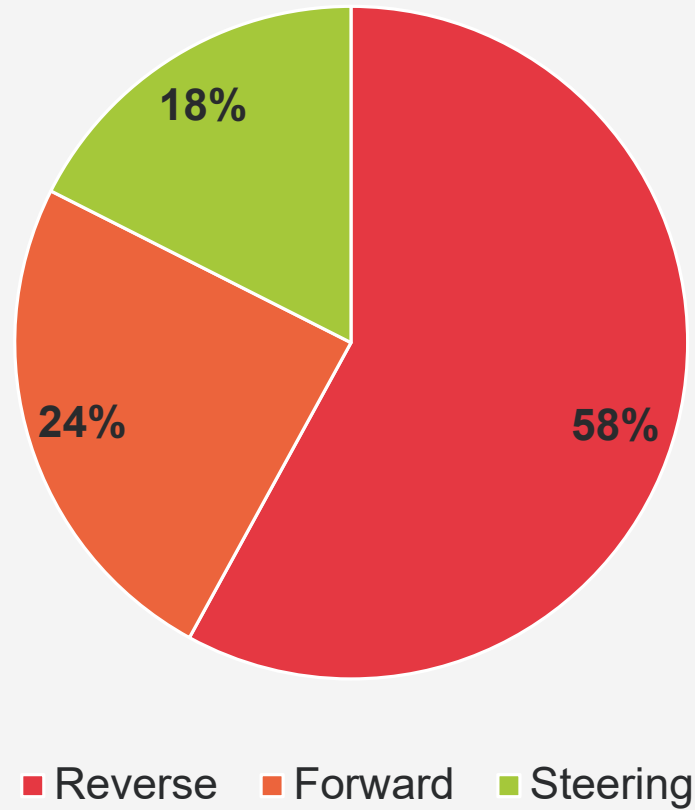
■ Reverse ■ Steering ■ Forward ■ Tipping

# Annex

## Other equipment

# Vibratory roller

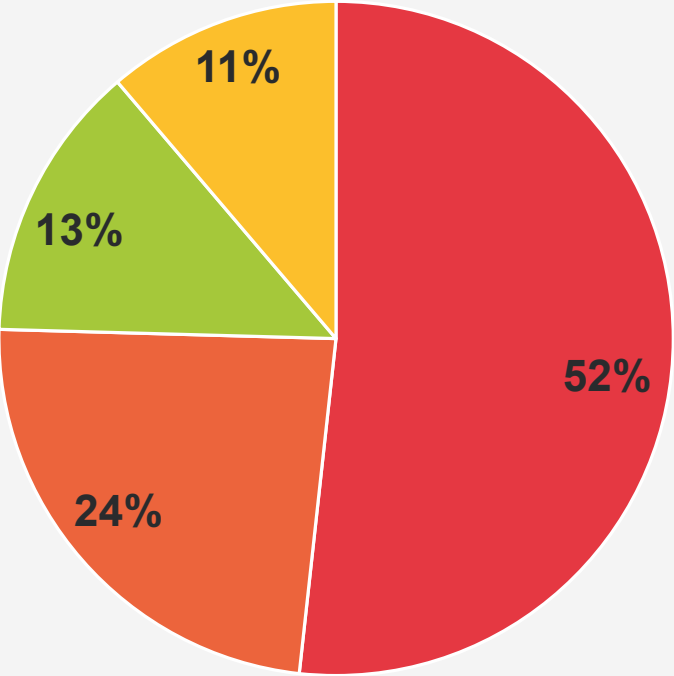
Q: Select the movements to stop (2 choices max)





# Mini track or wheel loader / Skid-steer

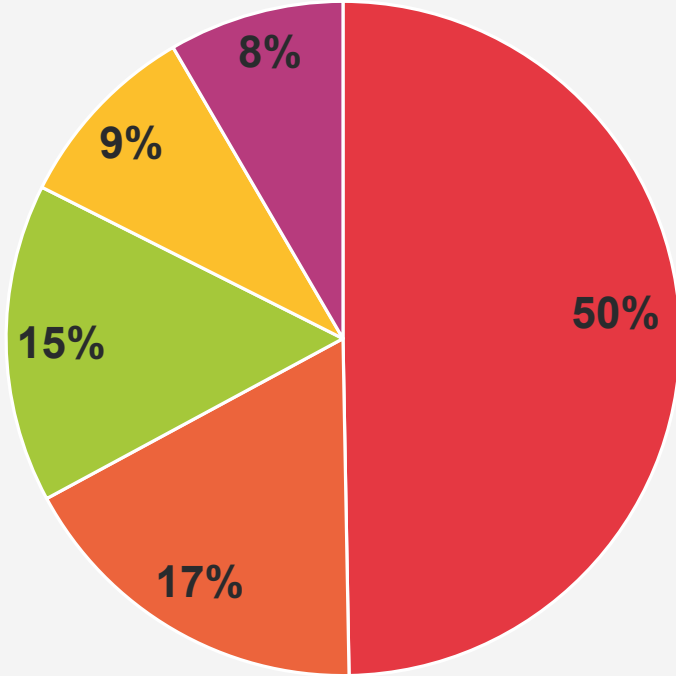
Q: Select the movements to stop (2 choices max)



■ Reverse   ■ Steering   ■ Bucket or tool movements   ■ Forward

# Motograder

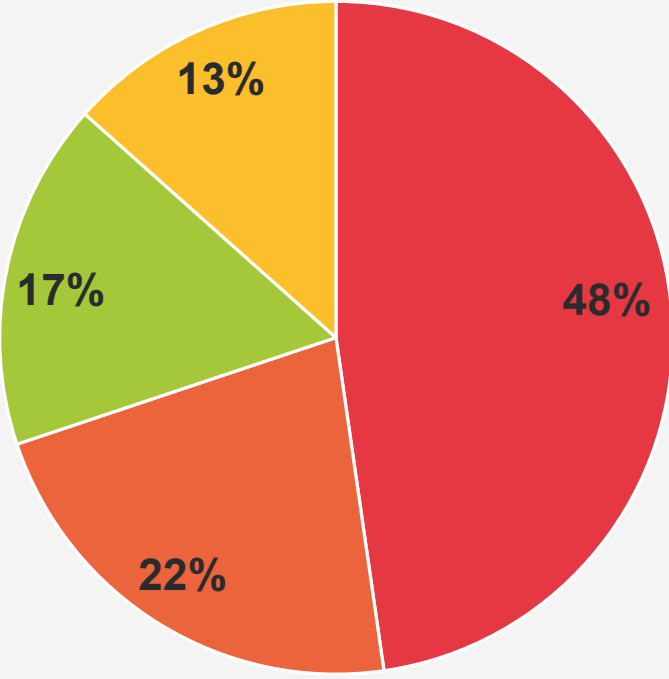
Q: Select the movements to stop (2 choices max)



■ Reverse ■ Forward ■ Steering ■ Blade movements ■ Ripper movements (if any)

# Hydroskid dumper

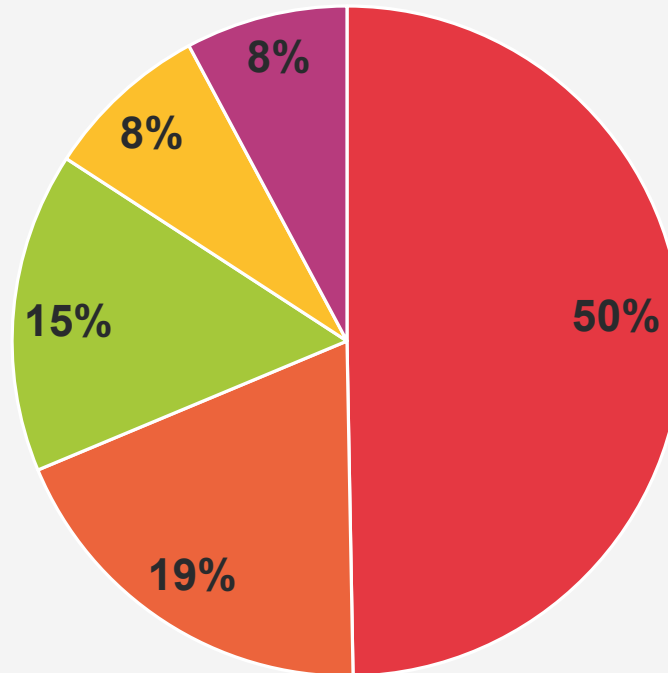
Q: Select the movements to stop (2 choices max)



■ Reverse ■ Forward ■ Steering ■ Tipping

# Bulldozer

Q: Select the movements to stop (2 choices max)



■ Reverse ■ Forward ■ Steering ■ Blade movements ■ Ripper movements

